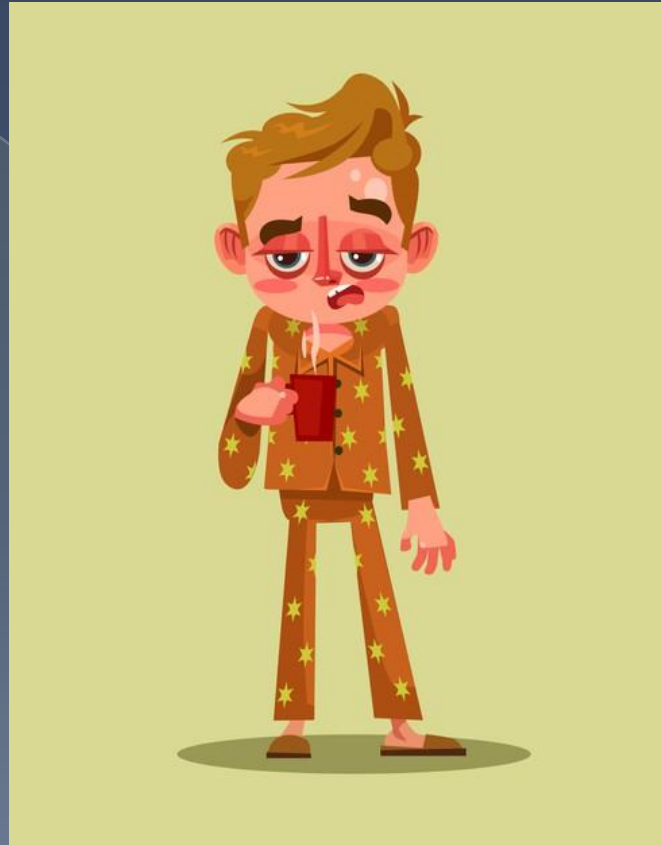


# PRESENT SIMPLE ΑΠΛΟΣ ΕΝΕΣΤΩΤΑΣ



Ο χρόνος της καθημερινότητας

# ΣΥΝΗΘΕΙΕΣ & ΡΟΥΤΙΝΑ

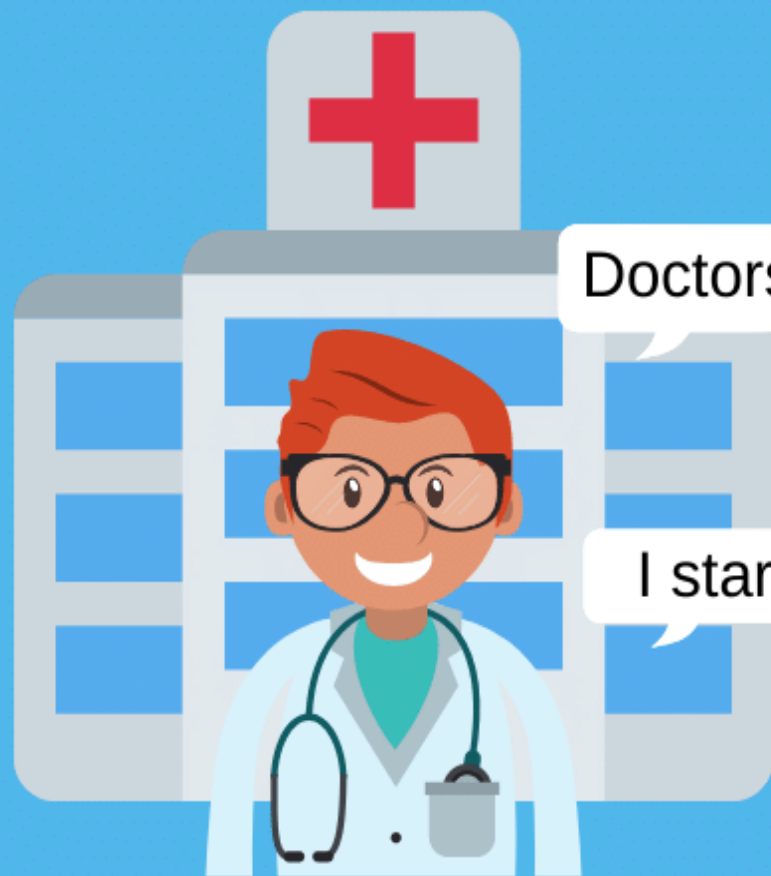


I wake up everyday  
at 8 o'clock.



**Present  
Simple  
Tense**

# ΕΡΓΑΣΙΑ, ΜΟΝΙΜΗ ΚΑΤΑΣΤΑΣΗ

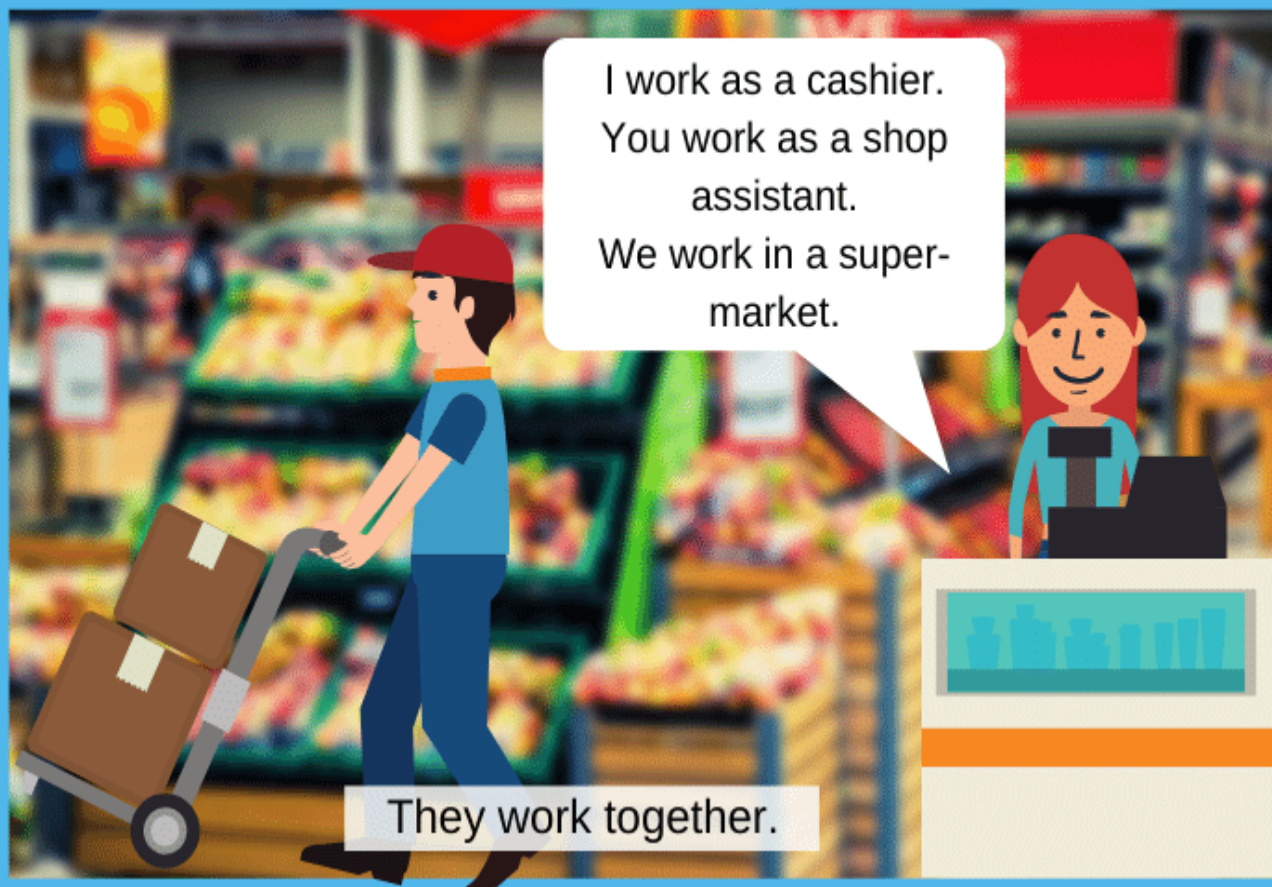


Doctors work in hospitals.

I start work at 9:00.

Use the  
**PRESENT  
SIMPLE**  
to describe  
things in  
general / that  
happen often

# ΧΩΡΙΣ ΚΑΤΑΛΗΞΗ ΣΤΑ ΠΕΡΙΣΣΟΤΕΡΑ ΠΡΟΣΩΠΑ



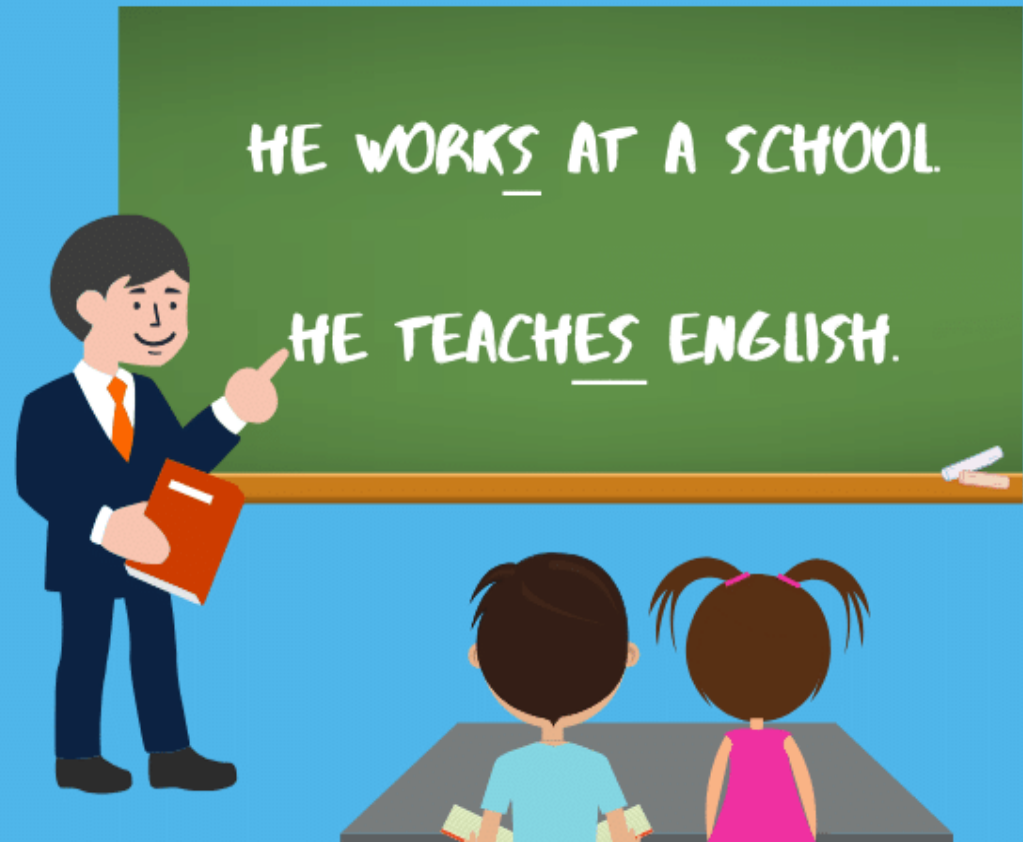
I work as a cashier.  
You work as a shop  
assistant.  
We work in a super-  
market.

They work together.

**Use the  
PLAIN  
INFINITIVE  
with  
"I / You / We  
/ They"**

# ΠΡΟΣΟΧΗ!!!: ΚΑΤΑΛΗΞΗ -S / -ES ΣΤΑ 'HE / SHE / IT'

With  
"he / she / it"  
add  
"s / es"  
to the end of  
the verb



# ΜΕ ΤΙΣ ΠΑΡΑΚΑΤΩ ΚΑΤΑΛΗΞΕΙΣ ΒΑΖΟΥΜΕ -ES

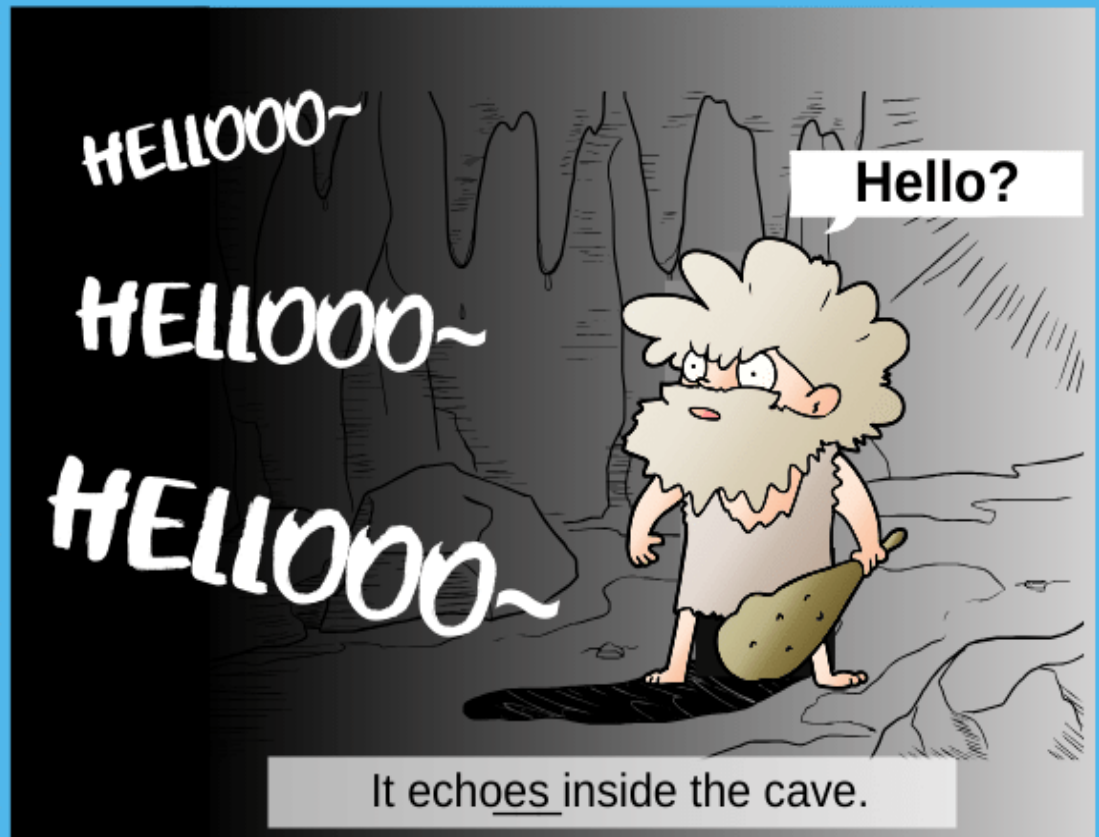
He watcheses a lot of TV series.



Verbs that  
end in  
"ss / sh / ch / tch / x /"  
add "es" in the  
3rd person  
singular

# ΚΑΙ ΤΑ ΡΗΜΑΤΑ ΣΕ -Ο ΠΑΙΡΝΟΥΝ ΚΑΤΑΛΗΞΗ -ES

Verbs that  
end in "o" also  
add "es" in  
the 3rd  
person  
singular



# ΤΑ ΡΗΜΑΤΑ ΣΕ -Υ ΠΑΙΡΝΟΥΝ ΚΑΤΑΛΗΞΗ -ΙΕΣ



**“-y” verbs in  
the 3rd person  
singular add  
“ies” if the  
previous letter  
is a consonant**

# ΣΤΗΝ ΕΡΩΤΗΣΗ ΧΡΗΣΙΜΟΠΟΙΟΥΜΕ DO / DOES

Questions in  
the present  
simple  
change  
word order  
and use  
"do / does"



# ΣΤΗΝ ΑΡΝΗΣΗ ΧΡΗΣΙΜΟΠΟΙΟΥΜΕ DON'T / DOESN'T

**Negatives in  
the present  
simple use  
"do not /  
don't,  
does not /  
doesn't"**

We do not work in  
a school and he  
doesn't speak  
English.

???



# ΣΥΝΟΔΕΥΕΤΑΙ ΑΠΟ ΕΠΙΡΡΗΜΑΤΑ ΣΥΧΝΟΤΗΤΑΣ

I always get up at 8:00.  
I sometimes read a book.  
I never go to the theatre.

The present simple is often used with adverbs of frequency

Always, usually, often, usually, seldom/rarely, never